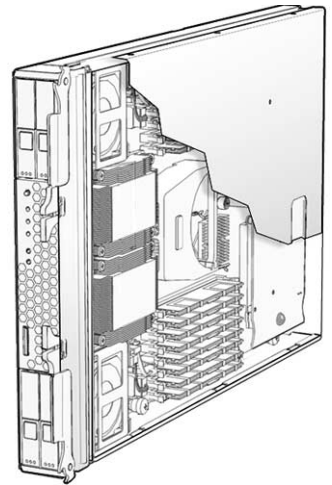


Sun Blade X6250 Server Module

Product Notes



Part No.: 820-1186-33,
March 2011

Copyright ©2007, 2011, Oracle and/or its affiliates. All rights reserved.

This software and related documentation are provided under a license agreement containing restrictions on use and disclosure and are protected by intellectual property laws. Except as expressly permitted in your license agreement or allowed by law, you may not use, copy, reproduce, translate, broadcast, modify, license, transmit, distribute, exhibit, perform, publish, or display any part, in any form, or by any means. Reverse engineering, disassembly, or decompilation of this software, unless required by law for interoperability, is prohibited.

The information contained herein is subject to change without notice and is not warranted to be error-free. If you find any errors, please report them to us in writing.

If this is software or related software documentation that is delivered to the U.S. Government or anyone licensing it on behalf of the U.S. Government, the following notice is applicable:

U.S. GOVERNMENT RIGHTS. Programs, software, databases, and related documentation and technical data delivered to U.S. Government customers are "commercial computer software" or "commercial technical data" pursuant to the applicable Federal Acquisition Regulation and agency-specific supplemental regulations. As such, the use, duplication, disclosure, modification, and adaptation shall be subject to the restrictions and license terms set forth in the applicable Government contract, and, to the extent applicable by the terms of the Government contract, the additional rights set forth in FAR 52.227-19, Commercial Computer Software License (December 2007). Oracle America, Inc., 500 Oracle Parkway, Redwood City, CA 94065.

This software or hardware is developed for general use in a variety of information management applications. It is not developed or intended for use in any inherently dangerous applications, including applications which may create a risk of personal injury. If you use this software or hardware in dangerous applications, then you shall be responsible to take all appropriate fail-safe, backup, redundancy, and other measures to ensure its safe use. Oracle Corporation and its affiliates disclaim any liability for any damages caused by use of this software or hardware in dangerous applications.

Oracle and Java are registered trademarks of Oracle and/or its affiliates. Other names may be trademarks of their respective owners.

AMD, Opteron, the AMD logo, and the AMD Opteron logo are trademarks or registered trademarks of Advanced Micro Devices. Intel and Intel Xeon are trademarks or registered trademarks of Intel Corporation. All SPARC trademarks are used under license and are trademarks or registered trademarks of SPARC International, Inc. UNIX is a registered trademark licensed through X/Open Company, Ltd.

This software or hardware and documentation may provide access to or information on content, products, and services from third parties. Oracle Corporation and its affiliates are not responsible for and expressly disclaim all warranties of any kind with respect to third-party content, products, and services. Oracle Corporation and its affiliates will not be responsible for any loss, costs, or damages incurred due to your access to or use of third-party content, products, or services.

Copyright © 2007, 2011, Oracle et/ou ses affiliés. Tous droits réservés.

Ce logiciel et la documentation qui l'accompagne sont protégés par les lois sur la propriété intellectuelle. Ils sont concédés sous licence et soumis à des restrictions d'utilisation et de divulgation. Sauf disposition de votre contrat de licence ou de la loi, vous ne pouvez pas copier, reproduire, traduire, diffuser, modifier, breveter, transmettre, distribuer, exposer, exécuter, publier ou afficher le logiciel, même partiellement, sous quelque forme et par quelque procédé que ce soit. Par ailleurs, il est interdit de procéder à toute ingénierie inverse du logiciel, de le désassembler ou de le décompiler, excepté à des fins d'interopérabilité avec des logiciels tiers ou tel que prescrit par la loi.

Les informations fournies dans ce document sont susceptibles de modification sans préavis. Par ailleurs, Oracle Corporation ne garantit pas qu'elles soient exemptes d'erreurs et vous invite, le cas échéant, à lui en faire part par écrit.

Si ce logiciel, ou la documentation qui l'accompagne, est concédé sous licence au Gouvernement des Etats-Unis, ou à toute entité qui délivre la licence de ce logiciel ou l'utilise pour le compte du Gouvernement des Etats-Unis, la notice suivante s'applique :

U.S. GOVERNMENT RIGHTS. Programs, software, databases, and related documentation and technical data delivered to U.S. Government customers are "commercial computer software" or "commercial technical data" pursuant to the applicable Federal Acquisition Regulation and agency-specific supplemental regulations. As such, the use, duplication, disclosure, modification, and adaptation shall be subject to the restrictions and license terms set forth in the applicable Government contract, and, to the extent applicable by the terms of the Government contract, the additional rights set forth in FAR 52.227-19, Commercial Computer Software License (December 2007). Oracle America, Inc., 500 Oracle Parkway, Redwood City, CA 94065.

Ce logiciel ou matériel a été développé pour un usage général dans le cadre d'applications de gestion des informations. Ce logiciel ou matériel n'est pas conçu ni n'est destiné à être utilisé dans des applications à risque, notamment dans des applications pouvant causer des dommages corporels. Si vous utilisez ce logiciel ou matériel dans le cadre d'applications dangereuses, il est de votre responsabilité de prendre toutes les mesures de secours, de sauvegarde, de redondance et autres mesures nécessaires à son utilisation dans des conditions optimales de sécurité. Oracle Corporation et ses affiliés déclinent toute responsabilité quant aux dommages causés par l'utilisation de ce logiciel ou matériel pour ce type d'applications.

Oracle et Java sont des marques déposées d'Oracle Corporation et/ou de ses affiliés. Tout autre nom mentionné peut correspondre à des marques appartenant à d'autres propriétaires qu'Oracle.

AMD, Opteron, le logo AMD et le logo AMD Opteron sont des marques ou des marques déposées d'Advanced Micro Devices. Intel et Intel Xeon sont des marques ou des marques déposées d'Intel Corporation. Toutes les marques SPARC sont utilisées sous licence et sont des marques ou des marques déposées de SPARC International, Inc. UNIX est une marque déposée concédée sous licence par X/Open Company, Ltd.

Ce logiciel ou matériel et la documentation qui l'accompagne peuvent fournir des informations ou des liens donnant accès à des contenus, des produits et des services émanant de tiers. Oracle Corporation et ses affiliés déclinent toute responsabilité ou garantie expresse quant aux contenus, produits ou services émanant de tiers. En aucun cas, Oracle Corporation et ses affiliés ne sauraient être tenus pour responsables des pertes subies, des coûts occasionnés ou des dommages causés par l'accès à des contenus, produits ou services tiers, ou à leur utilisation.



Contents

Preface ix

1. Introduction 1

- Software Included With Your System 1
 - Oracle Solaris 10 Operating System 1
 - Service Processor 2
 - New CRUs and FRUs 2
 - Table of Supported OS With Required Patches 4
 - Firmware Versions 5
 - Fixed and Open Issues 5
 - Documentation Errata 11
 - Tools and Drivers CD Image is Too Large for a CD 11

2. BIOS Issues 13

- REM Card Reports Firmware Corruption After BIOS/ILOM Upgrade (CR 6985415) 13
- System With SW2.0.2 Won't Boot With Serial Ports Disabled in BIOS 13
- Systems with 64GB DIMMS and PCIe EM Card Boot Slowly 14
- BIOS Asks For User Intervention if No Boot Device is Available (CR 6711002) 15
- Checksum Error Message Appears when Updating BIOS and SP Firmware (CR 6629176) 15

Adaptec RAID Utility Displays Characters Incorrectly (CR 6610180) 16
ELOM BIOS 21 Screen Might Display Incorrect Processor Frequency (CR
6568226) 16
PCIe ExpressModule Option ROM is Disabled by Default (CR 6606356) 17

3. Hardware Issues 19

PCIe Express Modules Don't Work After Hotplugging Server Modules
(6831944) 19
NMI Button Doesn't Work (CR 6892309) 19
Fans Run in High Speed Mode (CR 6804550) 20
You Must Reseat Your Server Module After Upgrading to Software Release
2.0.4 from 2.0, 2.0.1, 2.0.2 or 2.0.3 20
Hot-plug of the PCIe Express Module X7284A-Z Does Not Work Reliably (CR
6687123) 20
Hot Plug X1108A-Z Does Not Work (CR 6818703) 21
Hot Plugging PCIe EM Cards Can Cause Some Ports On the PCIe EM Card to
be Unavailable (CR 6818674) 21
Server Module Might Hang When Used With a Specific Chassis and NEM 22
Sun Dual 10GbE Fabric Expansion Module Support on Sun Blade X6250
Server Module. 22
Check Hardware Release Before Installing CPLD Update 22
Dongle Cable Connection 23
LEDs on SATA Hard Disk Drives Connected to Onboard Controller Stay ON
(CR 6680708) 23
The Operating System Cannot Detect the SAS Hard Disk Drives (CR
6843115) 23

4. Service Processor Issues 27

General Service Processor Issues 27
ILOM Does Not Recognize Message From BIOS Warning of Unsupported
DIMM (6764365) 27
Floppy Image Does Not Appear During Redirection With RHEL Host
(6828797) 28

Image Does Not Appear During Redirection of DVD from Oracle Solaris to RHEL (6876387)	28
CLI Command <code>stop/SYS</code> Does Not Work After Upgrade to SW3.0 (687471)	28
JavaRConsole Does Not Support Swedish or Finnish Keyboards (6781995 and 6824306)	29
JavaRconsole Does Not Support Swiss-French Keyboards (6753081)	29
'Upgrade Succeeded' Message Does Not Appear In Event Log (6875008)	29
Exiting BIOS while Preserving BIOS Options Causes JRC To Lose Connection (6878636)	30
Can Not Set Locate LED To Blink Using <code>ipmitool</code> (6876420)	30
Default User Can't Login to SP When <code>check_physical_presence</code> Is True (6875869)	30
SEL Log Incorrectly Reports "Correctable ECC Logging Limit Reached" (6855049)	30
Delaying BIOS Upgrade During Firmware Update Can Corrupt BIOS (CR 6813514)	31
Command to Clear CMOS Doesn't Work	31
Upgrading or Migrating From ELOM To ILOM 2.0 or ILOM 3.0	32
▼ To Migrate from ELOM to ILOM 2.0	32
The Existing BIOS Version Is Incorrect When Migrating from ILOM 2.0 to ILOM 3.0	32
Simultaneous Firmware Update (Flash) Sessions Could Cause Both To Fail	33
Use the Video Connector When Migrating from ELOM to ILOM or from ILOM to ELOM	33
<code>socflash</code> ILOM Recovery Utility Might Fail in Some Circumstances (CR 6743159)	34
Transition of ELOM to ILOM Requires SW2.0.2 Or Newer	34
Transition of ELOM to ILOM Does Not Work on Firefox 3.0.1	34
The Remote Console Session Times Out While a Storage Device is Mounted	35
CMM Service Processor Issues	35

Fans Run At High Speed After Host Reboot (6829945)	35
CMM Information Missing	35
Incorrect Server Module Power Management Calculation Prevents Server Module From Powering On (CR 6742133)	36
Chassis Management Module (CMM) Cannot Identify Server Module (CR 6592944)	37
ELOM Service Processor Issues	37
Changing ELOM Root Password Makes Server Module Become Unusable (CR 6713761)	37
ELOM Does Not Support Setting Time Zone (CR 6681098)	38
Chassis Fan Failure Is Not Logged in SEL As a Warning (CR 6558236)	38
Cannot Access Remote Console From ELOM Web Interface	38
ILOM Service Processor Issues	39
ILOM 3.0 Only Supports Five User Sessions (CR 6824144)	39
False Hotplug Chassis Events in SEL Log (CR 6742169)	39
SLES 9 Cannot Be Installed with RKVM In GUI Mode	40
Ignore Data-3 Portion of DIMM Error Message	40
Delay Before Green LED Responding to Power Button Push (CR 6721024)	40
ILOM Provides Faulty UUID (CR 6742030)	40
OK To Remove LED is OFF During Flash Upgrade	41
Resetting SP Root Password Using J23 Jumper Does Not Work (CR 6742739)	41
Graceful Shutdown of Host OS Does Not Work With Some Operating Systems (CR 6723745)	41
Green Power LED Works Differently with ILOM	42
Mouse Does Not Work During Remote Session (CR 6730145)	42
5. Software Issues	43
Delay Before Server Can Be Powered On After Software Upgrade (6893973)	43
PCCheck Cannot Run Multiple Times (6875913)	43

Upgrading to ILOM 3.0.3.33 Changes Onboard NIC Numbering and Breaks VMware Network Configuration (6853562)	44
Multiple RKVM Sessions Hang and Reconnect Automatically (6846082)	44
SUSE Linux With CF Card Reports HD Errors (CR 6850576)	44
Creating SSH Key During Upgrade to SW3.0 Takes Awhile (CR 6805802)	45
Intel Errata AX30 and AX52 Are Resolved with SW2.0.3 (CR 6826490)	45
OS Fails to Detect 146 or 300GB Hard Drives During Warm Boot	46
62GB of DIMM Available to OS on Systems with 64GB of DIMMs Installed	46
Oracle Solaris Reboots When PCIe EM is Hotplugged in Slot 0 (CR 6794631)	47
System Hangs when Booting	47
Server Modules Equipped with Additional Memory Take Longer to Run POST	47
VMware ESX/ESXi 3.5 u2 Health Status is Sometimes Reported Inconsistently	48
Arrow Keys Do Not Work When Using RKVM on SunRay	48
Keyboard Alt Key Appears Stuck in RKVM on RHEL4 and ESX 3.5 u2	48
Platform-Specific Drivers Installation Fails During Windows Installation	49
Networking Performance Regression With Oracle Solaris 10 5/08 (CR 6666472)	49
The Oracle Solaris OS Will Not Install On Systems Configured with RAID Arrays Larger Than One Terabyte	49
Error Message Appears When Finished Updating Platform-Specific Drivers and Optional Components (CR 6701068)	50
Systems with Red Hat Linux Might Hang	50
Question Mark in Device Manager When Sun Blade RAID 5 Expansion Module is Present	51
Driver Download Required Before Using StorageTek™ RAID Manager (CR 6606963)	51
PC-Check Hangs on Startup	51
VMware ESX 3.5 Process Uses 100% of Core (CR 6692155)	52

6. SIA Issues 55

- Installing Windows 2003 on Compact Flash with SIA Is Not Supported 55
- Installing Windows 2003 On SSD with SIA is Not Supported 55
- Problem With Installing Linux on External Storage if a Compact Flash is in the Server Blade 56
- SIA Does Not Install Tools During Post Install (Windows 2008 32/64 Bit) 57
- Firmware Upgrades Not Supported 57
- System BIOS and ILOM Upgrade With Inband Interface Doesn't Work (CR 6893972) 57
- SP Recovery Feature Is Not Functional (CR 6894003) 58
- The Next Button on the System Information Page Doesn't Work Correctly When Clicked Multiple Times (CR 6891807) 58
- System Information Error - Can't Show the Storage Device Information of the CF Card (CR 6891791) 58
- It Takes a Long Time to Enter the Next Step on Some Pages (CR 6890464) 59

Preface

This document describes hardware issues, software issues, and documentation issues for the Oracle® Sun Blade X6250 server module.

These Product Notes are intended to bring you late-breaking information about the system, as well as workarounds for problems you might encounter when installing, configuring, or operating your Sun Blade X6250 server module. This information is designed for system administrators who are experienced with the installation and configuration of the basic system components and software.

Issues include information that you should know about, such as prerequisites, tips, troubleshooting hints, and change requests. Change requests have tracking numbers shown in parentheses.

Product Updates and Drivers

For product updates that you can download for the Sun Blade X6250 server module, go to:

<http://www.sun.com/servers/blades/downloads.jsp>

Related Documentation

For a description of the document set for the Sun Blade X6250 modular system, see the *Where To Find Documentation* sheet that is packed with your system and also posted at the product's documentation site. See the following URL:

<http://download.oracle.com/docs/cd/E19045-01/blade.x6250/index.html>

Translated versions of some of these documents are available at the web site described above in French, Simplified Chinese, Traditional Chinese, Korean, and Japanese. English documentation is revised more frequently and might be more up-to-date than the translated documentation.

Sun Welcomes Your Comments

Sun is interested in improving its documentation and welcomes your comments and suggestions. To enter feedback, go to:

<http://www.oracle-surveys.com/se.ashx?s=25113745587BE578>

Introduction

This chapter provides a brief summary of software available on your server and other features. This chapter covers the following topics:

- [“Software Included With Your System” on page 1](#)
- [“New CRUs and FRUs” on page 2](#)
- [“Fixed and Open Issues” on page 5](#)
- [“Tools and Drivers CD Image is Too Large for a CD” on page 11](#)

Software Included With Your System

The following software is included with every Sun Blade X6250 server module shipped with a hard disk drive:

- [“Oracle Solaris 10 Operating System” on page 1](#)
- [“Service Processor” on page 2](#)

Oracle Solaris 10 Operating System

The Oracle® Solaris 10 Operating System (OS) delivers the security, manageability, and performance that IT professionals need to help increase service levels and decrease costs and risk. It also serves as the foundation for the Sun Java Enterprise System, an integrated, open, standards-based software system delivered using a new predictable approach for development, testing, and servicing. The Oracle Solaris OS is preinstalled on your server.

If you need to re-install the Oracle Solaris 10 OS, you can download the DVD image.

See your Oracle 10 Solaris documentation for download instructions. Online documentation for Oracle Solaris 10 OS can be found at:

<http://download.oracle.com/docs/cd/E19253-01/index.html>

Service Processor

The Sun Blade X6250 server module's service might be equipped with one of two versions of the service processor software:

- Older systems might be equipped with an Embedded Lights Out Manager (ELOM).
- Newer systems or those that have been upgraded are equipped with an Integrated Lights Out Manager (ILOM).

The ILOM can be ILOM 2.0 or ILOM 3.0.

The chassis is also equipped with a service processor, known as the Chassis Monitoring Module Integrated Lights Out Manager (CMM ILOM).

Note – Throughout this document, the letters ILOM refer to the service processor on the server module. The chassis service processor is referred to as the CMM ILOM.

New CRUs and FRUs

The following table shows the CRUs and FRUs.

TABLE 1-1 CRU and FRU List

Part	CRU or FRU
FRU, Blade, No CPU/Memory (motherboard)	FRU
CPU chip - dual core, 3.50 GHz, 1333 MHz (Xeon X5270)	FRU
CPU chip - quad core, 3.33 GHz, 1333 MHz (Xeon X5470)	FRU
CPU chip - quad core, 2.66 GHz, 1333 MHz (Xeon L5430)	FRU
CPU chip - quad core, 2.50 GHz, 1333 MHz (Xeon E5420)	FRU
CPU chip – quad-core, 1.86 GHz, 1066MHz (Xeon E5320)	FRU
CPU chip – quad-core, 1.60 GHz, 1066MHz (Xeon L5310)	FRU

TABLE 1-1 CRU and FRU List *(Continued)*

Part	CRU or FRU
CPU chip – quad-core, 2.33 Ghz, 1333MHz (Xeon E5345)	FRU
CPU chip – quad-core, 2.66 GHz, 1333MHz (Xeon X5355)	FRU
CPU chip – dual-core, 3.0 GHz, 1333 MHz (Xeon X5160)	FRU
CPU chip – quad-core, 3.0 GHz, 1333 MHz (Xeon X5365)	FRU
CPU chip – dual-core, 3.33 GHz, 1333 MHz (Xeon X5260)	FRU (see Note)
CPU chip – quad-core, 2.5 GHz, 1333 MHz (Xeon L5420)	FRU (see Note)
CPU chip – quad-core, 2.33 GHz, 1333 MHz (Xeon E5410)	FRU (see Note)
CPU chip – quad-core, 2.83 GHz, 1333 MHz (Xeon E5440)	FRU (see Note)
CPU chip – quad-core, 3.16 GHz, 1333 MHz (Xeon X5460)	FRU (see Note)
CPU chip - quad core, 3.00 GHz 1333 MHz (Xeon E5450)	FRU (see Note)
2 x 1GB, DIMM kit	CRU
2 x 2GB, DIMM kit	CRU
2 x 4GB, DIMM kit	CRU
80 GB SFF SATA disk drive	CRU
73 GB 10K SFF SAS disk drive	CRU
73 GB 15K SFF SAS disk drive	CRU
146 GB SFF SAS disk drive	CRU
200 GB SFF SATA disk drive	CRU
300 GB 10K SFF SAS disk drive	CRU
Sun Blade RAID 5 Expansion Module (REM) (with or without battery)	CRU
Battery for Sun Blade RAID 5 Expansion Module	CRU
Sun Blade 10 GigabitEthernet Multi-Fabric Network Express Module (FEM)	CRU
PCIe Pass Through Fabric Expansion Module (FEM)	CRU
Coin battery	CRU
Cable kit	CRU

Note – In servers with these CPUs, the Oracle Solaris 10 U4 OS requires patch 127112-05 or later, which must be added when the operating system is installed, as the server cannot boot without it. Servers with the Red Hat Linux must have RHEL 4.6 or newer.

Table of Supported OS With Required Patches

TABLE 1-2 Operating Systems and Required Patches

Supported OS	Required Patches
Red Hat Enterprise Linux 4 Update 6 64-bit	<i>No patches required</i>
Red Hat Enterprise Linux 4 Update 7 64-bit	
Red Hat Enterprise Linux 4 Update 8 64-bit	
Red Hat Enterprise Linux 5 Update 1 64-bit	
Red Hat Enterprise Linux 5 Update 2 64-bit	
Red Hat Enterprise Linux 5 Update 3 64-bit	
Oracle Solaris 10 5/08 (64-bit)	
Oracle Solaris 10 10/08 (64-bit)	
Oracle Solaris 10 5/09 (64-bit)	
SUSE Linux Enterprise Server 10 SP1 64-bit	
SUSE Linux Enterprise Server 10 SP2 64-bit	
SUSE Linux Enterprise Server 10 SP3 64-bit	
SUSE Linux Enterprise Server 9 SP3 64-bit	
SUSE Linux Enterprise Server 9 SP4 64-bit	
VMware ESX 4.0	
VMware ESXi 4.0	
VMware ESX 3.0.2 u1 or later	
VMware ESX 3.5 or later	
VMware ESXi 3.5 u2 or later	
Windows Server 2003 Enterprise Edition	
Windows Server 2003 Enterprise x64 Edition	
Windows Server 2003 Standard Edition	
Windows Server 2003 Standard x64 Edition	
Windows Server 2008 x64 Edition	
Windows Server 2008 x86 Edition	
Windows Server 2008 R2 64-bit	

Firmware Versions

TABLE 1-3 lists the latest released versions of the server module firmware.

TABLE 1-3 X6250 Firmware Versions for SW3.4

Hardware	ILOM	ELOM
BIOS	S90_3B27	1ADPI040
SP	3.0.6.13	4.0.54
CPLD (see Note)	140 or 307	140
REM (option card)	16795	16795

Note – Systems with older motherboards (375-3501-05 or older) can support CPLD levels up to 140. Systems with newer motherboards (375-3501-06 or newer) can support CPLD levels up to 307.

Systems with ILOM check the motherboard level and install the correct CPLD version. For systems with ELOM, you must check the motherboard level manually before updating the CPLD.

Fixed and Open Issues

TABLE 1-4 lists the latest issues, and identifies whether they are open or fixed. .

Note – Every software download includes a `readme.txt` file that lists the issues fixed in that release. For a list of specific issues associated with earlier releases, see the corresponding `readme.txt` file.

TABLE 1-4 Fixed and Open Issues

Issue	Status
BIOS	
“After Upgrading to BIOS 3B26, prtconf Command Reports Lower Available RAM (CR 7013124)” on page 13	Fixed in BIOS 3B27
“REM Card Reports Firmware Corruption After BIOS/ILOM Upgrade (CR 6985415)” on page 13	Workaround Available
“System With SW2.0.2 Won’t Boot With Serial Ports Disabled in BIOS” on page 2-13	Fixed in SW2.0.3
“Systems with 64GB DIMMS and PCIe EM Card Boot Slowly” on page 2-14	Fixed in SW2.0.3
“BIOS Asks For User Intervention if No Boot Device is Available (CR 6711002)” on page 2-15	Fixed in BIOS version 1ADPI40 of software release 1.3.1
“Checksum Error Message Appears when Updating BIOS and SP Firmware (CR 6629176)” on page 2-15	Advisory
“Adaptec RAID Utility Displays Characters Incorrectly (CR 6610180)” on page 2-16	Workaround available
“ELOM BIOS 21 Screen Might Display Incorrect Processor Frequency (CR 6568226)” on page 2-16	Workaround available
“PCIe ExpressModule Option ROM is Disabled by Default (CR 6606356)” on page 2-17	Workaround available
Hardware	
“PCIe Express Modules Don’t Work After Hotplugging Server Modules (6831944)” on page 3-19	Workaround available
“NMI Button Doesn’t Work (CR 6892309)” on page 19	Fixed in SW3.2
“Fans Run in High Speed Mode (CR 6804550)” on page 3-20	Fixed in ILOM 3.0
“You Must Reseat Your Server Module After Upgrading to Software Release 2.0.4 from 2.0, 2.0.1, 2.0.2 or 2.0.3” on page 3-20	Advisory
“Hot-plug of the PCIe Express Module X7284A-Z Does Not Work Reliably (CR 6687123)” on page 3-20	Open, workaround available
“Hot Plug X1108A-Z Does Not Work (CR 6818703)” on page 3-21	Open, workaround available
“Hot Plugging PCIe EM Cards Can Cause Some Ports On the PCIe EM Card to be Unavailable (CR 6818674)” on page 3-21	Open, workaround available

TABLE 1-4 Fixed and Open Issues *(Continued)*

Issue	Status
"Server Module Might Hang When Used With a Specific Chassis and NEM" on page 3-22	Workaround available
"Sun Dual 10GbE Fabric Expansion Module Support on Sun Blade X6250 Server Module." on page 3-22	Fixed by installing newer motherboard and CPLD
"Check Hardware Release Before Installing CPLD Update" on page 3-22	Advisory
"Dongle Cable Connection" on page 3-23	Advisory
"LEDs on SATA Hard Disk Drives Connected to Onboard Controller Stay ON (CR 6680708)" on page 3-23	No workaround available
"The Operating System Cannot Detect the SAS Hard Disk Drives (CR 6843115)" on page 3-23	Workaround available
General Service Processor Issues	
"ILOM Does Not Recognize Message From BIOS Warning of Unsupported DIMM (6764365)" on page 27	Fixed in SW3.1
"Floppy Image Does Not Appear During Redirection With RHEL Host (6828797)" on page 28	Open, workaround available
"Image Does Not Appear During Redirection of DVD from Oracle Solaris to RHEL (6876387)" on page 28	Open, workaround available
"CLI Command stop/SYS Does Not Work After Upgrade to SW3.0 (687471)" on page 28	Open, workaround available
"JavaRConsole Does Not Support Swedish or Finnish Keyboards (6781995 and 6824306)" on page 29	Fixed in SW3.1
"JavaRconsole Does Not Support Swiss-French Keyboards (6753081)" on page 29	Fixed in SW3.1
"'Upgrade Succeeded' Message Does Not Appear In Event Log (6875008)" on page 29	Fixed in SW3.1
"Exiting BIOS while Preserving BIOS Options Causes JRC To Lose Connection (6878636)" on page 30	Fixed in SW3.1
"Can Not Set Locate LED To Blink Using ipmitool (6876420)" on page 30	Fixed in SW3.1
"Default User Can't Login to SP When check_physical_presence Is True (6875869)" on page 30	Fixed in SW3.1
"SEL Log Incorrectly Reports "Correctable ECC Logging Limit Reached" (6855049)" on page 30	Fixed in ILOM 3.0
"Delaying BIOS Upgrade During Firmware Update Can Corrupt BIOS (CR 6813514)" on page 4-31	Workarounds available
"Command to Clear CMOS Doesn't Work" on page 4-31	Workaround available

TABLE 1-4 Fixed and Open Issues (Continued)

Issue	Status
"Upgrading or Migrating From ELOM To ILOM 2.0 or ILOM 3.0" on page 4-32	Advisory
"The Existing BIOS Version Is Incorrect When Migrating from ILOM 2.0 to ILOM 3.0" on page 4-32	Advisory
"Simultaneous Firmware Update (Flash) Sessions Could Cause Both To Fail" on page 4-33	Workaround available
"Use the Video Connector When Migrating from ELOM to ILOM or from ILOM to ELOM" on page 4-33	Advisory, workaround available
"socflash ILOM Recovery Utility Might Fail in Some Circumstances (CR 6743159)" on page 4-34	Fixed in SW3.0
"Transition of ELOM to ILOM Requires SW2.0.2 Or Newer" on page 4-34	Advisory
"Transition of ELOM to ILOM Does Not Work on Firefox 3.0.1" on page 4-34	Workaround available
"The Remote Console Session Times Out While a Storage Device is Mounted" on page 4-35	Workaround available
CMM Service Processor Issues	
"Fans Run At High Speed After Host Reboot (6829945)" on page 4-35	Fixed in SW3.1
"CMM Information Missing" on page 4-35	Fixed in CMM SW3.0
"Incorrect Server Module Power Management Calculation Prevents Server Module From Powering On (CR 6742133)" on page 4-36	Workarounds available
"Chassis Management Module (CMM) Cannot Identify Server Module (CR 6592944)" on page 4-37	Open
ELOM Service Processor Issues	
"Changing ELOM Root Password Makes Server Module Become Unusable (CR 6713761)" on page 4-37	Fixed in ELOM version 4.0.54
"ELOM Does Not Support Setting Time Zone (CR 6681098)" on page 4-38	Workaround available
"Chassis Fan Failure Is Not Logged in SEL As a Warning (CR 6558236)" on page 4-38	Workaround available
"Cannot Access Remote Console From ELOM Web Interface" on page 4-38	Workaround available
ILOM Service Processor Issues	
"ILOM 3.0 Only Supports Five User Sessions (CR 6824144)" on page 4-39	Open
"False Hotplug Chassis Events in SEL Log (CR 6742169)" on page 4-39	Fixed in SW2.0.2
"SLES 9 Cannot Be Installed with RKVM In GUI Mode" on page 4-40	Workaround available
"Ignore Data-3 Portion of DIMM Error Message" on page 4-40	Advisory

TABLE 1-4 Fixed and Open Issues (Continued)

Issue	Status
"Delay Before Green LED Responding to Power Button Push (CR 6721024)" on page 4-40	Advisory
"ILOM Provides Faulty UUID (CR 6742030)" on page 4-40	Fixed in SW2.0.1
"OK To Remove LED is OFF During Flash Upgrade" on page 4-41	Advisory
"Resetting SP Root Password Using J23 Jumper Does Not Work (CR 6742739)" on page 4-41	Open, workaround available
"Graceful Shutdown of Host OS Does Not Work With Some Operating Systems (CR 6723745)" on page 4-41	Open, workaround available
"Green Power LED Works Differently with ILOM" on page 4-42	Advisory
"Mouse Does Not Work During Remote Session (CR 6730145)" on page 4-42	Workaround available
Software	
"Delay Before Server Can Be Powered On After Software Upgrade (6893973)" on page 5-43	Workaround available
"PCCheck Cannot Run Multiple Times (6875913)" on page 43	Fixed in SW3.1
"Upgrading to ILOM 3.0.3.33 Changes Onboard NIC Numbering and Breaks VMware Network Configuration (6853562)" on page 44	Workaround available
"Multiple RKVM Sessions Hang and Reconnect Automatically (6846082)" on page 5-44	Fixed in SW3.1
"SUSE Linux With CF Card Reports HD Errors (CR 6850576)" on page 5-44	Open, advisory
"Creating SSH Key During Upgrade to SW3.0 Takes Awhile (CR 6805802)" on page 5-45	Open, advisory
"Intel Errata AX30 and AX52 Are Resolved with SW2.0.3 (CR 6826490)" on page 5-45	Fixed in SW2.0.3
"OS Fails to Detect 146 or 300GB Hard Drives During Warm Boot" on page 5-46	Workaround available
"62GB of DIMM Available to OS on Systems with 64GB of DIMMs Installed" on page 5-46	Advisory
"Oracle Solaris Reboots When PCIe EM is Hotplugged in Slot 0 (CR 6794631)" on page 5-47	Fixed in SW2.0.4
"System Hangs when Booting" on page 5-47	Workaround available
"Server Modules Equipped with Additional Memory Take Longer to Run POST" on page 5-47	Advisory
"VMware ESX/ESXi 3.5 u2 Health Status is Sometimes Reported Inconsistently" on page 5-48	Workaround available

TABLE 1-4 Fixed and Open Issues (Continued)

Issue	Status
"Arrow Keys Do Not Work When Using RKVM on SunRay" on page 5-48	Workaround available
"Keyboard Alt Key Appears Stuck in RKVM on RHEL4 and ESX 3.5 u2" on page 5-48	Workaround available
"Platform-Specific Drivers Installation Fails During Windows Installation" on page 5-49	Workaround available
"Networking Performance Regression With Oracle Solaris 10 5/08 (CR 6666472)" on page 5-49	Fixed in Oracle Solaris 10 5/08 patch 137112-06
"The Oracle Solaris OS Will Not Install On Systems Configured with RAID Arrays Larger Than One Terabyte" on page 5-49	Advisory
"Error Message Appears When Finished Updating Platform-Specific Drivers and Optional Components (CR 6701068)" on page 5-50	Advisory
"Systems with Red Hat Linux Might Hang" on page 5-50	Fixed in various Red Hat Linux updates
"Question Mark in Device Manager When Sun Blade RAID 5 Expansion Module is Present" on page 5-51	Advisory
"Driver Download Required Before Using StorageTek™ RAID Manager (CR 6606963)" on page 5-51	Fixed by downloading driver
"PC-Check Hangs on Startup" on page 5-51	Workaround available
"VMware ESX 3.5 Process Uses 100% of Core (CR 6692155)" on page 5-52	Fixed in SW2.0.3
SIA	
"Installing Windows 2003 on Compact Flash with SIA Is Not Supported" on page 6-55	Fixed in SW3.0
"Installing Windows 2003 On SSD with SIA is Not Supported" on page 6-55	Fixed in SW3.1
"Problem With Installing Linux on External Storage if a Compact Flash is in the Server Blade" on page 6-56	Workaround available
"SIA Does Not Install Tools During Post Install (Windows 2008 32/64 Bit)" on page 6-57	Open, workaround available
"Firmware Upgrades Not Supported" on page 6-57	Fixed in SW3.0
"System BIOS and ILOM Upgrade With Inband Interface Doesn't Work (CR 6893972)" on page 6-57	Workaround available
"SP Recovery Feature Is Not Functional (CR 6894003)" on page 6-58	Workaround available

TABLE 1-4 Fixed and Open Issues (Continued)

Issue	Status
“The Next Button on the System Information Page Doesn’t Work Correctly When Clicked Multiple Times (CR 6891807)” on page 6-58	Workaround available
“System Information Error - Can't Show the Storage Device Information of the CF Card (CR 6891791)” on page 6-58	Open
“It Takes a Long Time to Enter the Next Step on Some Pages (CR 6890464)” on page 6-59	Workaround available

Documentation Errata

The Sun Blade RAID 5 Expansion Module is sometimes referred to as the Sun Blade RAID Expansion Module.

Tools and Drivers CD Image is Too Large for a CD

The tools and drivers image is too large to fit on a CD. Instead, burn the image to a DVD.

BIOS Issues

This chapter describes BIOS issues related to the Sun Blade X6250 server module.

After Upgrading to BIOS 3B26, `prtconf` Command Reports Lower Available RAM (CR 7013124)

After upgrading the BIOS to 3B26, the `prtconf` command reports reduced amounts of RAM available. For example:

- Before the BIOS upgrade, it reports 64768MB of memory
- After upgrading to BIOS 3B26, it reports 61183MB.

Workaround

Upgrade to BIOS 3B27 as described in the *Sun Integrated Lights Out Manager 3.0 Supplement for Sun Blade X6250 Server Module*.

REM Card Reports Firmware Corruption After BIOS/ILOM Upgrade (CR 6985415)

After upgrading the BIOS/ILOM firmware, the REM card might report firmware corruption.

Workaround

Reset the BIOS password and clear CMOS using jumper J23, as described in the *Sun Blade X6250 Server Module Service Manual*, in the chapter *Resetting the BIOS Password and Clearing CMOS*.

Note – To clear this issue, you must clear CMOS using the jumper. There are other ways to clear CMOS, but they do not correct this problem.

System With SW2.0.2 Won't Boot With Serial Ports Disabled in BIOS

On systems with SW2.0.2 and BIOS 3B12, the system won't boot if serial ports 1 and 2 are disabled in the BIOS.

Note – To avoid this problem, do not disable your serial ports on systems with SW2.0.2.

Workaround 1

Upgrade to SW2.0.3 or newer.

Workaround 2

Enable the ports in the BIOS.

- 1. Boot the system.**
- 2. Press F2 to access the BIOS.**
- 3. When the BIOS main menu appears, select Advanced Settings -> SuperIO Configuration.**
- 4. Enable Serial ports 1 and 2 on this view.**
- 5. Save your settings then exit.**

The system should boot normally.

Systems with 64GB DIMMS and PCIe EM Card Boot Slowly

Systems equipped with 64 GB of DIMMs and a PCIe EM card boot slowly. This affects systems equipped with SW2.0.2 and BIOS 3B12, and with the following operating systems:

- W2K8 32
- RHEL4 U7 32
- RHEL5.2 32
- RHEL5.2 64
- SLES9 SP4 32
- SLES10 SP2 32
- Oracle Solaris10 U5/U6

Workaround 1

Upgrade the software to SW2.0.3 and BIOS 3B14.

Workaround 2

Remove the PCIe EM card or some of the DIMMs.

Note – DIMMs must be removed in pairs.

BIOS Asks For User Intervention if No Boot Device is Available (CR 6711002)

If no boot device is available in the boot list during startup, the BIOS waits for user intervention.

Workaround

Please make sure to have a boot device available before starting the server module.

This is fixed in BIOS version 1ADPI40 of software release 1.3.1.

To obtain the latest Tools and Drivers DVD, go to:

<http://www.sun.com/servers/blades/downloads.jsp>

Checksum Error Message Appears when Updating BIOS and SP Firmware (CR 6629176)

During the BIOS and SP firmware update, the screen might display the message:

```
Error (0005) : CMOS Checksum Bad
Press F2 to run SETUP
Press F1 to load default values and continue.
```

Note – The checksum error is not a problem. The message just indicates that the checksum for the new BIOS is different from the original.

If the console screen does not display a checksum message, you are finished; the system boots.

If the console screen does display a checksum message:

- To load the default (optimal) values and continue, do nothing. The system resets the BIOS settings back to defaults and boots after 5 seconds.

or

- To change settings in the BIOS, follow these steps:

1. **Press F2.**
2. **When the BIOS main menu appears, press F9.**
Pressing F9 loads the defaults. You must do this prior to editing the settings.
3. **Change the settings as you wish.**
4. **Save your settings and exit.**

Adaptec RAID Utility Displays Characters Incorrectly (CR 6610180)

The Adaptec Raid Utility might display characters incorrectly, causing them to scroll past.

Workaround

Set your terminal type to ANSI.

ELOM BIOS 21 Screen Might Display Incorrect Processor Frequency (CR 6568226)

For some processor configurations, the BIOS Main screen displays an incorrect processor speed.

Workaround:

- 1. During system startup, press F2 to change BIOS settings.**

The BIOS main menu appears.

- 2. Press F9 to load Optimal defaults and save your setting by pressing F10.**

- 3. Restart your server.**

This is fixed with BIOS 1ADPI21C or later.

PCIe ExpressModule Option ROM is Disabled by Default (CR 6606356)

PCIe ExpressModule option ROM is disabled by default.

Workaround

To boot from a PCIe ExpressModule, enable the PCIe ExpressModule option ROM in the BIOS. Use the following steps:

- 1. During system startup, press F2 to change BIOS settings.**

The BIOS main menu appears.

- 2. Navigate to Boot -> Boot Settings Configuration.**

- 3. Select Enable PEM 0/1 FUN* Option ROM.**

Hardware Issues

This chapter describes hardware issues related to the Sun Blade X6250 server module.

PCIe Express Modules Don't Work After Hotplugging Server Modules (6831944)

After hotplugging one or more server modules, certain PCIe express modules (371-4018) don't work.

Workaround

- **Try the following:**

- Re-insert the PCIe express module.

- Re-insert the server module.

- Wait 30 seconds and re-insert the second server module.

NMI Button Doesn't Work (CR 6892309)

In systems equipped with ILOM 3.1, pressing the NMI (Non-Maskable Interrupt) button on the server module front panel does not reset the host. It does write an entry into the SEL log.

This is fixed in Release 3.2.

Fans Run in High Speed Mode (CR 6804550)

Under some conditions, the chassis fans run in high speed mode when the temperature conditions do not require it. This causes excess noise, power consumption, and wear on the fans.

Workaround

To fix this problem, update the ILOM and the CMM ILOM to 3.0.

To upgrade the ILOM, see [“Upgrading or Migrating From ELOM To ILOM 2.0 or ILOM 3.0” on page 32.](#)

You Must Reseat Your Server Module After Upgrading to Software Release 2.0.4 from 2.0, 2.0.1, 2.0.2 or 2.0.3

After upgrading to software release 2.0.4 from 2.0, 2.0.1, 2.0.2 or 2.0.3:

- 1. Eject the server module from the chassis to remove power.**

You do not have to completely remove the server from the chassis. Eject the server module just far enough to disengage it from the chassis connector.

- 2. Wait 30 seconds, and insert the server module into the chassis.**

Hot-plug of the PCIe Express Module X7284A-Z Does Not Work Reliably (CR 6687123)

Hot-plug functionality on the Sun Blade X6250 server module with the PCIe Express Module X7284A-Z does not work reliably. Do not attempt to hot-plug this Express Module.

Workaround

Stop the host, install the PCIe Express module, then restart the host.

Hot Plug X1108A-Z Does Not Work (CR 6818703)

The X1108A-Z does not work after it is hot plugged.

Workaround

After plugging this board in, press the power button on the server module to power off the host.

Hot Plugging PCIe EM Cards Can Cause Some Ports On the PCIe EM Card to be Unavailable (CR 6818674)

If you hot plug the following PCIe EM boards into a new slot, some ports might be unavailable. The affected boards include:

- Sun StorageTek Dual 4Gb FC Dual GbE HBA (QLogic) SG-XPCIE2FCGBE-Q-Z
- Sun StorageTek Dual 4Gb FC Dual GbE HBA (Emulex) SG-XPCIE2FCGBE-E-Z
- 1GbE Quad Port ExpressModule – Copper (Intel) X7284A-Z
- InfiniBand PEM X4216A-Z and X1288A-Z

Note – This problem does not affect boards that are removed, then hotplugged into their original slot.

The following Microsoft white paper provides additional information, even though this issue affects Linux and Oracle Solaris operating systems as well:

http://www.microsoft.com/whdc/connect/pci/bios_hotplugpcie.msp

Workaround

Insert the board when the host is powered-off, or insert the board then power-cycle or reset the host.

Server Module Might Hang When Used With a Specific Chassis and NEM

The Sun Blade X6250 server module might hang when:

- The server module motherboard is rev 375-3501-05 or older, and the server module is equipped with a Sun Blade RAID 5 Expansion Module.
- The server module is placed in a Sun Blade 6000 Modular System equipped with a Sun Blade 6000 10GbE Multi-Fabric Network Express Module or a Sun Blade 6000 Multi-Fabric Network Express Module.

Workaround

To prevent the server module from hanging under these conditions, upgrade the Sun Blade RAID 5 Expansion Module firmware version to rev 15825 or newer before upgrading your network express module to a Sun Blade 6000 10GbE Multi-Fabric Network Express Module or a Sun Blade 6000 Multi-Fabric Network Express Module.

You can obtain firmware downloads at:

<http://www.sun.com/servers/blades/downloads.jsp>

Sun Dual 10GbE Fabric Expansion Module Support on Sun Blade X6250 Server Module.

The Sun Dual 10GbE Fabric Expansion Module is supported only on motherboard version 375-3501-06 or newer. It also requires CPLD version 231 or higher.

Note – To check the CPLD version information, see your service processor documentation.

Check Hardware Release Before Installing CPLD Update

Before installing CPLD version 231, check the part number on the motherboard. It must be 375-3501-06 or newer. If you have a motherboard with a different part number, DO NOT install CPLD version 231.

To find the part number, either use the service processor, or look for the number printed on the motherboard itself. See the corresponding ILOM documentation for details.

Dongle Cable Connection

If you have a dongle cable connected to a server module, make sure to remove it before closing the door of a rack cabinet. The dongle might be damaged if it is not removed before the cabinet door is closed.

LEDs on SATA Hard Disk Drives Connected to Onboard Controller Stay ON (CR 6680708)

If you connect a SATA hard disk drive or an SSD to the onboard SATA controller:

- If you have CPLD 140, the blue and amber LEDs stay On.
- If you have CPLD 231, the green LEDs stay on.

There is no workaround at this time.

The Operating System Cannot Detect the SAS Hard Disk Drives (CR 6843115)

The operating system (OS) does not report the newly inserted SAS hard disk drive.

In this case, you will not be able to use the new SAS hard disk drive.

Workaround

All SAS hard disk drives that are attached to the Sun Blade RAID 5 Expansion Module (REM) must be initialized by the firmware (Ctrl-A option in BIOS), and a volume or array must be created before they are listed by BIOS or the OS.

Note – Some operating systems might require a reconfiguration reboot before they list the new hard drives.

Use the following procedure:

1. **Power-cycle your server.**

2. During power up, type Control -A to bring up the Adaptec RAID Controller Utility (ARCU).

A message appears, then the ARCU opens.

3. Select Array Configuration Utility.

The Array Configuration Utility appears.

4. Select Initialize Drives.

A list of drives appears.

5. Select drives to initialize.

- Use the arrow keys to scroll through the list.
- Use the space bar to select a drive.

Note – You must initialize any drive that does not contain data or an operating system. Normally, these will be new drives that you have installed.

6. When you have selected a drive, press Enter.

A message warns you that initializing a drive erases array information from it.

7. Type yes.

The utility initializes the selected drives, and the main screen appears.

8. Select Create Array from the main menu.

A list of drives appears.

9. Select the drives to be included in the array.

- Use the arrow keys to scroll through the list.
- Use the space bar to select a drive.

10. When you have made your selections, press Enter.

The Array Properties view appears.

11. Make the following selections:

- Array Type – Select an array type from the drop-down list.
- Array Label – Type in a label.
- Stripe Size – Type in a stripe size.
- Read Caching – Type Y or N.
- Write Caching – Select an option from the list.

12. Press Enter or click Done to proceed.

Depending on the Write Caching selection, a number of warnings might appear:

- If the Write Caching setting is Enable Always, and if you do not have a battery, or if the battery is not charged sufficiently, a couple of warnings might appear. Type Yes to proceed, or type No to return to the Array Properties screen.
- If the write cache is enabled, a write cache warning appears.

Note – On Linux systems, the RAID manager software is required to read the battery state.

13. Click Enter to proceed.

The utility initializes the array.

Service Processor Issues

This chapter describes the service processor issues.

It is divided into the following sections:

- [“General Service Processor Issues” on page 27](#) - Issues that affect systems with both ILOM and ELOM service processors.
- [“CMM Service Processor Issues” on page 35](#) - Issues that affect the Chassis Management Module (CMM).
- [“ELOM Service Processor Issues” on page 37](#) - Issues that affect systems with ELOM service processors only.
- [“ILOM Service Processor Issues” on page 39](#) - Issues that affect systems with ILOM service processors only.

General Service Processor Issues

This section describes service processor issues that affect systems regardless of the type of service processor.

ILOM Does Not Recognize Message From BIOS Warning of Unsupported DIMM (6764365)

The ILOM does not recognize messages from the BIOS warning that unsupported DIMMs are installed.

This is fixed in SW3.1.

Floppy Image Does Not Appear During Redirection With RHEL Host (6828797)

The contents of the floppy drive do not appear during redirection with a RHEL host.

Workaround

1. Enter the following commands:

```
$ echo 2 >/sys/module/scsi_mod/max_luns
```

```
$ cat /sys/module/scsi_mod/max_luns
```

2. Try to select the floppy contents again.

The floppy contents appear.

Image Does Not Appear During Redirection of DVD from Oracle Solaris to RHEL (6876387)

If you redirect a physical DVD or image file from Oracle Solaris to RHEL, when you select the CDROM icon, it appears empty.

Workaround

1. Use the `lsscsi` command to check the device name of the DVD.

The system displays output similar to this:

```
[5:0:0:0] cd/dvd AMI Virtual CDROM 1.00 /dev/scd1
```

Note the device name, `/dev/scd1`.

2. Mount the device on a new or existing directory. For example:

```
# mount /dev/scd1 /mnt
```

The DVD contents appear under `/mnt`.

CLI Command `stop/SYS` Does Not Work After Upgrade to SW3.0 (687471)

After upgrading to SW3.0, the CLI command `stop/SYS` does not work.

Workaround

Use the GUI or the `stop -f /SYS` command.

JavaRConsole Does Not Support Swedish or Finnish Keyboards (6781995 and 6824306)

Remote JavaRconsole sessions do not support Swedish or Finnish keyboards.

Workaround

Upgrade to SW3.1.

JavaRconsole Does Not Support Swiss-French Keyboards (6753081)

Remote JavaRconsole sessions do not support Swiss-French keyboards.

Workaround 1

Upgrade to SW3.1

Workaround 2

Use a French keyboard.

'Upgrade Succeeded' Message Does Not Appear In Event Log (6875008)

After upgrading (flashing) the SP image to 3.0.6.13, the message that the upgrade succeeded does not appear in the event log.

This is fixed in SW3.1.

Exiting BIOS while Preserving BIOS Options Causes JRC To Lose Connection (6878636)

During a Java Remote Console session, if you configure the BIOS, then select Save Changes and Exit, the JRC session might be disconnected.

This is fixed in SW3.1.

Can Not Set Locate LED To Blink Using ipmitool (6876420)

Using `ipmitool ... chassis identify 0` should cause the locate LED to blink, but it does not.

This is fixed in SW3.1.

Default User Can't Login to SP When check_physical_presence Is True (6875869)

The default user can't login to the SP when `check_physical_presence` is true.

This is fixed in SW3.1.

SEL Log Incorrectly Reports "Correctable ECC Logging Limit Reached" (6855049)

The SEL log incorrectly reports "Correctable ECC logging limit reached" when it encounters a single correctable error. It also lights the fault LED, indicating incorrectly that a DIMM has failed.

Workaround

Upgrade to ILOM 3.0. It continues to report correctable errors when they occur, but it does not report that the logging limit is reached until it encounters 24 correctable errors in 24 hours, which is normal behavior.

Delaying BIOS Upgrade During Firmware Update Can Corrupt BIOS (CR 6813514)

The ILOM SP firmware upgrade procedure includes an option to delay the BIOS update until the host is reset. This allows you to update the firmware without resetting the host.

Three scenarios can cause this to corrupt your BIOS:

- If you select this option, then power down the host and remove the server module from its slot before the BIOS update is complete.
- If you select this option, then power down the host and power on the server module immediately before the BIOS update is complete.
- If you start another SP firmware update before the BIOS update has been completed.

Workaround 1

Do not select the Delay BIOS Update option.

Workaround 2

If you use the Delay BIOS Update option, ensure that no one removes the server module from its slot, powers on the host, or attempts to update the SP firmware until after the host has been reset and the BIOS update is complete.

After the host is powered off, the BIOS update might take three to four minutes.

Command to Clear CMOS Doesn't Work

The ILOM and ELOM documentation states that you should clear CMOS if you can't get output to the serial console after updating your ILOM firmware.

This command does not work.

Workaround

Use the procedure in the *Sun Blade X6250 Server Module Service Manual*.

Upgrading or Migrating From ELOM To ILOM 2.0 or ILOM 3.0

In order to use the full functionality of ILOM 3.0, the server modules and the chassis must both be updated to ILOM 3.0. However, ILOM 3.0 is not required for the server modules to operate in a chassis with CMM ILOM 3.0.

Your server module might be equipped with one of three service processors: ELOM, ILOM 2.0, or ILOM 3.0.

If you wish, you can upgrade (migrate) your ELOM service processor to ILOM 2.0 or ILOM 3.0.

▼ To Migrate from ELOM to ILOM 2.0

- **Use the instructions in the *ELOM-to-ILOM Migration User's Guide*.**

Some of the file names in the *ELOM-to-ILOM Migration User's Guide* are out of date. For example, the following files have been updated for SW2.0.3:

6250i20 .bin has been replaced by 6250i203 .bin

3B11 .bat has been replaced by 3B14 .bat



Caution – Filenames are sometimes updated more often than the documentation. Always use the files that came with the release you are installing, unless you receive specific instructions to do otherwise.



Caution – When you migrate from ELOM to ILOM 2.0, always migrate to ILOM 2.0.4 or later. Do not migrate to an earlier ILOM.



Caution – When you are updating the service processor, there is an option to preserve settings. This option does NOT apply to BIOS settings; if the upgrade includes a different version of the BIOS, the BIOS settings will be reset to defaults.

The Existing BIOS Version Is Incorrect When Migrating from ILOM 2.0 to ILOM 3.0

During the ILOM 2.0 to ILOM 3.0 migration procedure, when you are updating the firmware, the existing BIOS version is listed as “unknown.”

This does not indicate a problem or a failure. If a message about unknown information is displayed, you can ignore it.

Simultaneous Firmware Update (Flash) Sessions Could Cause Both To Fail

If you attempt to update (flash) the SP firmware from two different sessions at the same time, they will probably both fail and leave your SP in an unstable state.

Note – An SP firmware update takes about six minutes. Once it has started, you should not do anything else with the SP until it is finished.

Workaround

If your SP becomes unusable after updating the firmware, use the instructions in the corresponding documentation collection, and in the ILOM supplement documentation collection to recover.

Use the Video Connector When Migrating from ELOM to ILOM or from ILOM to ELOM

The ELOM-to-ILOM Migration Guide states that you should connect a serial terminal to the dongle to do conversions. This is incorrect. Instead, connect a video monitor to the video connector on the dongle when doing the conversions.

Workaround

Connect a video monitor to the dongle cable to do the conversions.

socflash ILOM Recovery Utility Might Fail in Some Circumstances (CR 6743159)

The ILOM supports the `socflash` recovery utility, which can be used to recover ILOM from DOS on newer server modules. However, in some circumstances, for example, when upgrading from ELOM to ILOM, `socflash` might fail with write errors.

This issue is fixed in SW3.0.

Workaround 1

Upgrade the software to SW3.0.

Workaround 2

Use the `afudos` tool to flash the ILOM BIOS first. If the problem persists, retry the `socflash`.

See the *Sun Integrated Lights Out Manager for Sun Blade X6250 Server Module* for details.

Transition of ELOM to ILOM Requires SW2.0.2 Or Newer

Before upgrading from ELOM to ILOM, download software release 2.0.2 or newer.

In the ELOM-to-ILOM Migration Guide, it states that you must reseat your server module after making the transition. With software release 2.0.2 or newer, this is not necessary.

You can obtain downloads of the latest software releases at:

<http://www.sun.com/downloads>

Transition of ELOM to ILOM Does Not Work on Firefox 3.0.1

You cannot use Firefox 3.0.1 to transition from the ELOM to the ILOM.

Workaround

Use Firefox 2.x.x or IE 7.0.5730.11.

The Remote Console Session Times Out While a Storage Device is Mounted

After you have mounted a storage device through the web GUI remote console application, the web GUI session might time out, and the remote console connection to the mounted remote storage might be lost.

Workaround

Disable the session time out in the web GUI when using remote storage device using remote console application.

CMM Service Processor Issues

This section describes service processor issues that affect the Chassis Management Module (CMM).

Fans Run At High Speed After Host Reboot (6829945)

After a host reboot, the fans run at full speed momentarily. This is caused by a false overtemperature event.

This is fixed in SW3.1.

CMM Information Missing

Earlier versions of the CMM fail to provide the following information:

- Fan speed
- PSU Information

- NEM information
- CMM FRU information

Workaround

Upgrade to CMM SW3.0. See the ILOM documentation collection for details.

Incorrect Server Module Power Management Calculation Prevents Server Module From Powering On (CR 6742133)

The CMM manages the power budget for the chassis. When an X6250 server module is inserted, cold booted, or the SP is reset, it reports its power requirements to the CMM.

Occasionally, the CMM incorrectly records that a X6250 server module requires 593W.

Normally, this will not cause any problems. However, in certain rare circumstances, this problem might be duplicated in many of the server modules in the chassis. If the total requested power exceeds the power allowance for the chassis, when a server module is inserted, cold booted, or the SP is reset, the host will fail to power on.

Workaround 1

1. **Power off the host.**
2. **Either reseal the server module, or reset the SP.**

See the service processor documentation for details.

Workaround 2

- **Enter the following CMM command:**

```
-> set /CMM/powermgmt/advanced/reserve_psus=0
```

See the service processor documentation for details.

Note – Because fully-configured X6250 server modules do not use more than 50% of the available power, the PSU can still be safely hotplugged.

Chassis Management Module (CMM) Cannot Identify Server Module (CR 6592944)

The Sun Blade 6000 CMM cannot identify the server module correctly, and lists it incorrectly as an “unknown blade.” When queried for the part number, it displays an incorrect number (501-7376) instead of the correct number (540-7254).

There is no workaround for this problem. Please contact your Sun service representative.

ELOM Service Processor Issues

This section describes service processor issues that affect systems with an ELOM service processor.

Changing ELOM Root Password Makes Server Module Become Unusable (CR 6713761)

Changing the ELOM root password can cause the ELOM to become inaccessible.

This issue has been fixed with ELOM version 4.0.54 of Software release 1.3.3.

Workaround

To change the ELOM root password:

- 1. Login to the ELOM web GUI or CLI.**
- 2. Change the root password.**
- 3. Logout of the ELOM web GUI or CLI.**
- 4. Login again, using the new password.**

See the *Sun Blade X6250 Server Module Embedded Lights Out Manager Administration Guide* for details.

ELOM Does Not Support Setting Time Zone (CR 6681098)

The ELOM does not support setting time zones. Instead, it synchronizes with the time setting in the BIOS.

Workaround

Use the BIOS to set the time zone.

Chassis Fan Failure Is Not Logged in SEL As a Warning (CR 6558236)

Chassis fan failures are not logged in BMC (service processor) system event log (SEL) as a warning.

This does not impact the server module.

Workaround

Check the chassis status using the ELOM. Refer to the *Sun Blade X6250 Server Module Embedded Lights Out Manager Administration Guide* for more information.

Cannot Access Remote Console From ELOM Web Interface

The Remote Console Java application fails to launch through the ELOM web GUI interface.

Workaround

The Remote Console application requires JRE 1.5.0 or later.

Update the Java version on the host running the web browser and try again.

Workaround

Disable the session time out in the web GUI when using remote storage device using remote console application.

ILOM Service Processor Issues

This section describes service processor issues that affect systems with an ILOM service processor.

ILOM 3.0 Only Supports Five User Sessions (CR 6824144)

ILOM 3.0 memory can only support five user sessions. If additional user sessions are created, it might terminate existing sessions. Also, under some conditions, it might crash the BIOS.

False Hotplug Chassis Events in SEL Log (CR 6742169)

You might occasionally see false hot-insertion or hot-removal events in the web GUI or the CLI event log. For example:

Event ID	Class	Type	Severity	Date/Time	Description
5	Chassis	Action	major	Tue Sep 2 22:11:14 2008	Hot insertion of /SYS/PS0
4	Chassis	Action	major	Tue Sep 2 22:11:13 2008	Hot removal of /SYS/PEM0
3	Chassis	Action	major	Tue Sep 2 22:11:05 2008	Hot removal of /SYS/PS0
2	Chassis	Action	major	Tue Sep 2 22:11:05 2008	Hot insertion of /SYS/PEM0

You can disregard these events.

To be sure of hotplug events, use the IPMI SEL. It should always have the correct hotplug events. For example:

```
ipmitool -H MY.WOLF.IP.ADDR -U root -P changeme sel elist
```

shows component's PRSNT sensor as Present or Absent.

This is fixed in release 2.0.2.

SLES 9 Cannot Be Installed with RKVM In GUI Mode

On systems equipped with ILOM, SLES 9 cannot be installed with RKVM in GUI mode because SLES 9 can't start the X server.

Workaround

Continue the installation in text mode.

Ignore Data-3 Portion of DIMM Error Message

When viewed using IPMItool version 1.8.9.4 or later (as provided with the service processor), DIMM error messages look like the following:

```
26 | Pre-Init Time-stamp | Memory | Uncorrectable Error | Asserted
   | OEM Data-2 0xb5 OEM Data-3 0x0b
```

The Data-2 value identifies the faulty DIMM (channel B, slot 5 in this case). Ignore the Data-3 portion of the message.

Delay Before Green LED Responding to Power Button Push (CR 6721024)

After you push the power button, there is a 5 to 6 second delay before the green LED responds.

ILOM Provides Faulty UUID (CR 6742030)

The ILOM provides a UUID to uniquely and globally identify the server. However in the X6250 server module, the UUID is incorrectly formatted, and is not guaranteed to be unique.

Workaround

Use another number (such as the server's port 0 MAC address) to uniquely identify the server.

This is fixed in SW2.0.1.

OK To Remove LED is OFF During Flash Upgrade

On systems with an ILOM service processor, the OK to remove LED is OFF during a flash upgrade. This is unlike the behavior of systems with an ELOM service processor, where the OK to remove LED is ON during a flash upgrade.

Resetting SP Root Password Using J23 Jumper Does Not Work (CR 6742739)

The jumper-based method of resetting the ILOM root password described in the service processor documentation does not work on the X6250 server module.

Workaround

Either:

- Use BIOS Setup -> BMC Password Reset to reset the ILOM root password, or
- Use the socflash ILOM recovery utility to restore the ILOM to the default configuration.

Graceful Shutdown of Host OS Does Not Work With Some Operating Systems (CR 6723745)

The ILOM (GUI, CLI, and IPMI) performs a graceful OS shutdown by initiating an ACPI short button press.

Certain operating systems do not honor the ACPI short button press. For example, this might be the case when the console is logged in.

Workaround

Modify the operating system configuration, or login to the operating system to perform a graceful shutdown.

Green Power LED Works Differently with ILOM

On server modules equipped with an ILOM service processor, when the server module is plugged in:

- The three status LEDs blink three times at 1Hz.
- The green LED blinks at 1Hz during POST.
- After post the green LED either:
 - Stays on if the server module is powered on.
 - Blinks 2.9 sec off/.1 sec on if the server module is on standby power.

Mouse Does Not Work During Remote Session (CR 6730145)

Older versions of Linux do not support the ILOM's default absolute mouse mode.

If you have an older version of Linux on your server module, if you configure a remote management session and the mouse doesn't work, you must reset the ILOM mouse mode from absolute to relative.

Workaround

1. **Click the Remote Control tab.**
2. **Click the Mouse Mode Settings tab.**
3. **Select Relative Mouse Mode.**
4. **Select Save.**

The ILOM displays a message, then reboots itself. When the ILOM has rebooted, you can re-establish the remote session and the mouse will work.

Note – In order to switch control between the local mouse and the host mouse, press **Alt +m**.

Software Issues

This chapter describes software issues related to Oracle's Sun Blade X6250 server module.

Delay Before Server Can Be Powered On After Software Upgrade (6893973)

After performing a software upgrade, there is a delay of about three minutes before the server can be powered on.

Workaround

Wait three minutes or more before powering on a server after a software upgrade.

PCCheck Cannot Run Multiple Times (6875913)

If you stop and start the host more than once, PCcheck does not run after the first time, and an error message appears in dmesg:

```
BotReqHandler() : BOT Reset Request Called
ERROR: UsbWriteData(): Transmission timeout for Device 0 EP 2 for
DataSize 0xD
Error in Sending CSW for EP2
WARNING:Wakeup for Sleep Struct(0xc71be6dc) Called after timeout
ERROR: UsbWriteData(): Transmission timeout for Device 0 EP 2 for
DataSize 0x24
Error in Sending SCSI_INQUIRY
```

Workaround

Retry several times until it runs.

Upgrading to ILOM 3.0.3.33 Changes Onboard NIC Numbering and Breaks VMware Network Configuration (6853562)

Upgrading from ILOM 2.0.5 to 3.0 rennumbers the onboard NIC devices, which breaks VMware network configuration.

Workaround

Reinstall VMware.

Multiple RKVM Sessions Hang and Reconnect Automatically (6846082)

This issue includes two related problems:

1. If you connect multiple RKVM sessions to a server module, then reset the server module's SP, the sessions hang sporadically instead of continuing without interruption.
2. If you connect multiple RKVM sessions to a server module and disconnect one or more of the sessions, they reconnect automatically.

These issues are fixed in SW3.1.

SUSE Linux With CF Card Reports HD Errors (CR 6850576)

On systems with a CF card, SUSE 10/9 reports errors.

For example:

```
dmesg | grep -i fail  
hda: drive_cmd: status=0x51 { DriveReady SeekComplete Error }  
hda: drive_cmd: error=0x04 { DriveStatusError }
```

```
or you might see...
Error attaching device data
aer: probe of 0000:00:02.0:pcie01 failed with error 1
aer: probe of 0000:00:03.0:pcie01 failed with error 2
```

These messages can be ignored. They do not affect system performance.

Creating SSH Key During Upgrade to SW3.0 Takes Awhile (CR 6805802)

While upgrading to SW3.0, it can take about five minutes to create the SSH key. The screen displays:

```
SSH RSA Host Key files don't exist. Creating...
Starting sshd
```

Workaround

While this might take awhile, it should still work. No action is necessary.

Intel Errata AX30 and AX52 Are Resolved with SW2.0.3 (CR 6826490)

Intel Errata AX30

Intel Errata AX30 states that programming the digital thermal sensor (DTS) threshold in the Intel 5400-series processor can cause an unexpected thermal interrupt.

This issue has been resolved by a software change in SW2.0.3.

This interrupt might not happen in all previously-released software versions. However it is recommended as a standard practice that all systems be upgraded to the latest software version to ensure that the latest fixes are installed.

Intel Errata AX52

Intel Errata AX52 states that a rare set of timing conditions and address alignments of instructions in a short nested loop sequence might cause a machine check exception or a system hang in software that contains multiple conditional jump instructions and spans multiple 16-byte boundaries.

This issue has been resolved by a software change in SW2.0.3.

OS Fails to Detect 146 or 300GB Hard Drives During Warm Boot

On systems with a Sun Blade RAID 5 expansion module, the operating system might fail to detect one or more 146 or 300 GB hard drives during a warm boot.

Workaround

If your server module has a Sun Blade RAID expansion module, and you upgrade to either 146GB (390-0448-02) or 300GB (390-0449-02) hard drive(s), you must update the Sun Blade RAID expansion module firmware to 15872 or newer.

The firmware is included in the Tools and Drivers DVD.

62GB of DIMM Available to OS on Systems with 64GB of DIMMs Installed

On systems with 64GB of DIMMs installed, only 62GB is available to the operating system.

In SW2.0.3, some enhancements were made to support PCIe EM hotplugging. These included increasing the option ROM space to 256MB per device. Because of this change, systems with 64GB of memory only show 62GB of memory available to the OS.

Note – On systems with less than 64GB of DIMMs, the full memory is available to the OS.

Oracle Solaris Reboots When PCIe EM is Hotplugged in Slot 0 (CR 6794631)

If you hotplug a PCIe EM in slot 0 on a system running Oracle Solaris, the system reboots. This only occurs if the system did not previously have a PCIe EM card in slot 0.

This problem only appears on systems equipped with Oracle Solaris 10u6 or later.

Workaround 1

Hotplug a PCIe EM card in slot 0, and allow the system to reboot.

Workaround 2

Download and install SW2.0.4.

System Hangs when Booting

Single-processor systems equipped with X5260 or X5270 processors and Oracle Solaris 10u5 or 10u6 hang when booting.

Workaround

Disable the core multiprocessing in the BIOS.

- 1. Start the BIOS.**
- 2. Select Advanced -> CPU Configuration**
- 3. Select Disable Core Multiprocessing.**
- 4. Save your changes and exit.**

Server Modules Equipped with Additional Memory Take Longer to Run POST

A server module that is fully populated with DIMMs can take up to three additional minutes to boot, due to the time required to run POST tests on the DIMMs.

VMware ESX/ESXi 3.5 u2 Health Status is Sometimes Reported Inconsistently

VMware ESX/ESXi releases provide a health status and monitoring feature. Incompatibility between the ILOM and VMware IPMI interfaces causes ILOM IPMI sensors to be partially displayed in the VMware health status window. Sensors might also appear and disappear, and updates occur slowly.

Workaround

Use the ILOM GUI, CLI, SNMP, or IPMI interfaces to monitor server health. Also, the ILOM provides remote syslog and remote alert interfaces to enable remote monitoring.

Arrow Keys Do Not Work When Using RKVM on SunRay

The arrow keys do not work when using an RKVM on a SunRay.

Workaround

Use alternative keystrokes, or remap the arrow keystrokes in the SunRay X session.

Keyboard Alt Key Appears Stuck in RKVM on RHEL4 and ESX 3.5 u2

During RKVM sessions with RHEL4 and ESX 3.5 u2, the Alt key appears stuck.

Workaround

- **From the javaRconsole menu:**
 - Select **Keyboard ->Left Alt Key**.
 - Deselect **Keyboard ->Left Alt Key**.

Platform-Specific Drivers Installation Fails During Windows Installation

On older server modules, during Windows installations when you are installing platform-specific drivers, you might see the following error message:

```
Setup failed to detect the correct model and cannot continue
```

This occurs when the BIOS manufacturer string is not Sun Microsystems.

Workaround

Use `DriverPack.zip` and Device Manager, or `OptPack.zip` to install all drivers and applications manually, as described in the *Sun Blade X6250 Windows Operating System Installation Guide*.

Networking Performance Regression With Oracle Solaris 10 5/08 (CR 6666472)

Servers running Oracle Solaris 10 5/08 you might experience reduced network performance.

Workaround:

Install patch 137112-06.

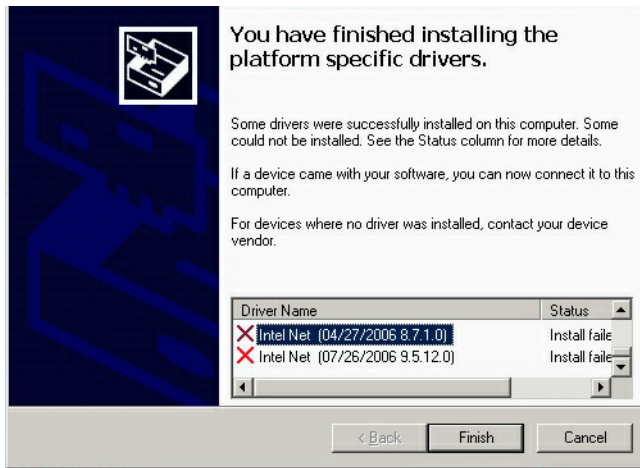
The Oracle Solaris OS Will Not Install On Systems Configured with RAID Arrays Larger Than One Terabyte

The Oracle Solaris OS cannot be installed on systems configured with RAID arrays larger than one terabyte because Oracle Solaris installer doesn't support it.

Error Message Appears When Finished Updating Platform-Specific Drivers and Optional Components (CR 6701068)

Upon completing the platform specific drivers and optional components update, an error message states that some drivers could not be installed. [FIGURE 5-1](#) shows an example.

FIGURE 5-1 Sample of Error Message



Workaround

This message can be ignored.

Systems with Red Hat Linux Might Hang

Some systems running Red Hat Enterprise Linux 4.5 or older might hang. This is because of a change in the Intel addressing scheme, allowing it to address greater than 36 bits.

Workaround

Update Red Hat Enterprise Linux to one of the following:

- 4.5 to kernel-2.6.9-55-0.12.EL (released November 1, 2007) or newer

- Red Hat Enterprise Linux 4.6 (released November 14, 2007)
- Red Hat Enterprise Linux 5

For more details, see:

http://kbase.redhat.com/faq/FAQ_85_11696.shtm

Question Mark in Device Manager When Sun Blade RAID 5 Expansion Module is Present

If you install the Windows OS on a server that includes a Sun Blade RAID 5 Expansion Module, a question mark might appear in the device manager next to the Adaptec Virtual SPGIO 0 Device.

Workaround

This is harmless. However you can get rid of the question mark by reinstalling the driver.

1. **Right click the** Adaptec Virtual SPGIO 0 Device **entry in the device manager.**
2. **Select** Update Driver Software.
The operating system re-installs the driver.

Driver Download Required Before Using StorageTek™ RAID Manager (CR 6606963)

Before you can use the Adaptec Storage Manager, you must download and install the latest aac driver.

The driver is included in the Tools and Drivers DVD.

To obtain the latest Tools and Drivers DVD, go to:

<http://www.sun.com/servers/blades/downloads.jsp>

PC-Check Hangs on Startup

PC-Check cannot start, and hangs at “Detecting Hardware.”

Workaround

1. Login to the web GUI and reset the system:

- For systems with ELOM:

a. Select Remote Control => Remote Power Control.

b. Select Do not boot from PCCheck and click Submit.

c. Again select Remote Power Control => Reset, then click Submit.

- For systems with ILOM:

a. Select Remote Control.

The Remote Control tabs appear.

b. Select Remote Power Control.

The Host Control page appears.

c. Select BIOS from the drop down list, then select Save.

d. Select the Remote Power Control tab, then select Reset from the drop-down menu.

Select Save.

The host resets and messages appear on the screen.

2. Press F2 to enter BIOS setup.

3. Navigate to Server => Remote Access Configuration and press Enter.

4. Select Remote Access and change it to Disabled.

5. Press F10 to save changes and exit BIOS.

You can now successfully start PCCheck tool.

VMware ESX 3.5 Process Uses 100% of Core (CR 6692155)

The VMware ESX 3.5 process occasionally uses 100% of a core. This is fixed in SW2.0.3.

For example:

```
# cat /proc/vmware/interrupts
Vector PCPU 0    PCPU 1    PCPU 2    PCPU 3    PCPU 4    PCPU 5    PCPU 6    PCPU 7
0x21:  7442833      0         0         0         0         0         0         0
VMK ACPI Interrupt
```

Workaround

- 1. Edit the file `/etc/vmware/esx.conf` and add the line `/vmkernel/mpsIntRouting = "TRUE"`.**
- 2. Reboot the system.**

This issue is fixed in BIOS version 1ADPI40 of SW1.3.1.

SIA Issues

This chapter describes issues related to the Sun Installation Assistant (SIA).

SIA supports the following operating systems:

- Red Hat Enterprise Linux 4 Update 6,7 and 8, 32-bit and 64-bit
- Red Hat Enterprise Linux 5 Update 1, 2 and 3, 64-bit
- SUSE Linux Enterprise Server 10 SP1 and SP2 64-bit
- Windows Server 2003 Enterprise Edition
- Windows Server 2003 Enterprise x64 Edition
- Windows Server 2003 Standard Edition
- Windows Server 2003 Standard x64 Edition
- Windows Server 2008 x64 Edition
- Windows Server 2008 R2 x86 Edition

Installing Windows 2003 on Compact Flash with SIA Is Not Supported

You cannot install Windows 2003 on compact flash using SIA.

This is fixed in SIA 2.3.10.0, which is included in SW3.1.

Installing Windows 2003 On SSD with SIA is Not Supported

You cannot install Windows 2003 to the Solid State Disk (SSD) using SIA.

This is fixed in SIA 2.2.14.0, which is included in SW3.0.

Problem With Installing Linux on External Storage if a Compact Flash is in the Server Blade

When installing Red Hat or SLES on external storage with a compact flash in the blade, the boot loader is written by default to the compact flash.

If you prefer to have the boot loader on the external disk, you can choose one of two alternative workarounds:

Workaround 1

Remove the compact flash from the server blade. Then the Master Boot Record (MBR) is written to external storage by default.

Workaround 2

Configure the MBR during Linux installation.

Example configuration for Red Hat:

- 1. In the Boot Loader Configuration window:**
 - a. Check the `Configure advanced boot loader options` check box on the bottom of the page.**
 - b. Click the `Next` button.**
- 2. Click the `Change Drive Order` button in the next window.**
- 3. Use the arrow keys to move the boot disk device you want to the top of the list and then choose `OK`.**
- 4. In the `Install Boot Loader record on:` list, select the `Master Boot Record (MBR)` device, click `Next`, and then follow the installation instructions.**

Example configuration for Sles10 SP1:

- 1. In the `Installation Settings` dialog box, choose the `Expert` tab.**
- 2. Check the `Partition section` check box and change the configuration, if needed.**
- 3. Select `Booting` section for `Boot Loader Settings`. Choose the `Boot Loader Installation` tab and click the `Other` button. Select `Edit Configuration Files`.**

4. In the Contents section of `/boot/grub/device.map`, change the order of the devices by changing the number in `hd<x>`. For example, edit `hd0` and change it to `hd1` for `/dev/hda`; edit `hd1` and change it to `hd0` for `/dev/sda`. Then, save the configuration.
5. Next, click Filename list and select the file `/boot/grub/menu.lst`. Change all `hd0` and `hd1` entries in the file according to the new `/boot/grub/device.map` (for example, to `hd1` and `hd0`).
6. Save the new configuration and proceed with the OS installation.

SIA Does Not Install Tools During Post Install (Windows 2008 32/64 Bit)

SIA does not install tools (Intel NIC Teaming, and Sun IPMITool) during post install.

Workaround

Use the Tools and Driver DVD to install tools, as described in the *Sun Blade X6250 Operating System Installation Guide*.

Firmware Upgrades Not Supported

SP/BIOS firmware upgrade and expander firmware upgrade are not supported on SIA 2.1.8.

This is fixed in SIA 2.2.14.0, which is included in SW3.0.

System BIOS and ILOM Upgrade With Inband Interface Doesn't Work (CR 6893972)

The selection "System BIOS and ILOM Upgrade (uses inband interface)" does not work.

This is a new SIA 2.3 feature that is not functional in SW 3.1 (SIA 2.3.10.0).

Workaround

Select " System BIOS and ILOM Upgrade (uses network)" to upgrade BIOS and ILOM.

SP Recovery Feature Is Not Functional (CR 6894003)

This is a new SIA 2.3 feature, but it is not functional in SW 3.1 (SIA 2.3.10.0).

Workaround

Use the Tools & Drivers DVD to recover BIOS and ILOM. See the PDF in the firmware directory for instructions

The Next Button on the System Information Page Doesn't Work Correctly When Clicked Multiple Times (CR 6891807)

The System Information page can take a long time to display its information. If you click the Next button while waiting, the SIA CD hangs and the Next button fails to respond.

Workaround

Don't click any buttons until the System Information page has displayed all its information.

If the system hangs, reboot it.

System Information Error - Can't Show the Storage Device Information of the CF Card (CR 6891791)

If you insert a CF card into the CF slot, then remove other storage and launch SIA, the Storage Device section on the System Information page is empty.

There is no workaround at this time.

It Takes a Long Time to Enter the Next Step on Some Pages (CR 6890464)

While doing an OS installation, after SIA identifies the OS and lists the option cards, when you click Next, it can take a long time to display the next page.

This problem is intermittent.

Workaround

Reboot the system and try again.

