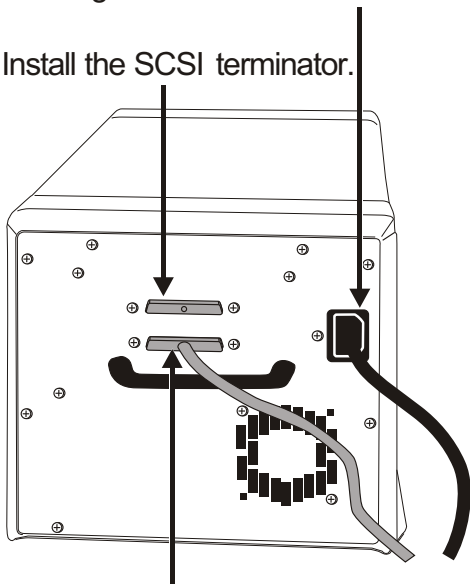


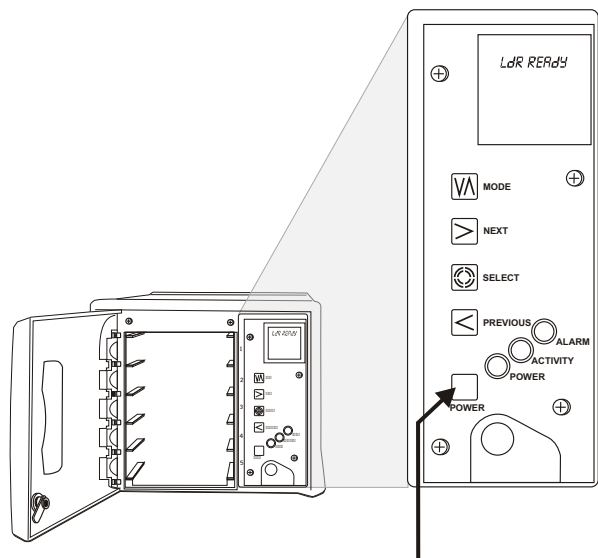
StorEdge™ L7 Quick Start Guide

- 1 Connect the AC line cord to the StorEdge L7 and then to the AC outlet.



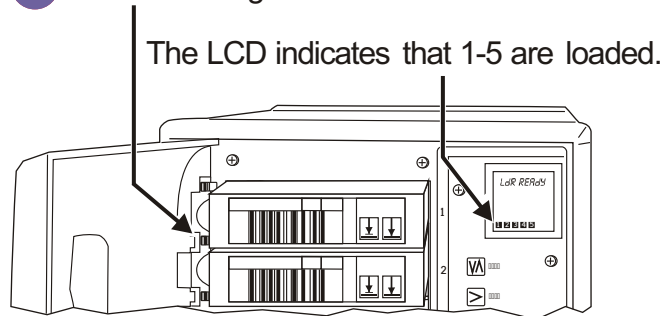
- 2 Install the SCSI terminator.

- 3 Connect the SCSI cable between the StorEdge L7 and the host system.

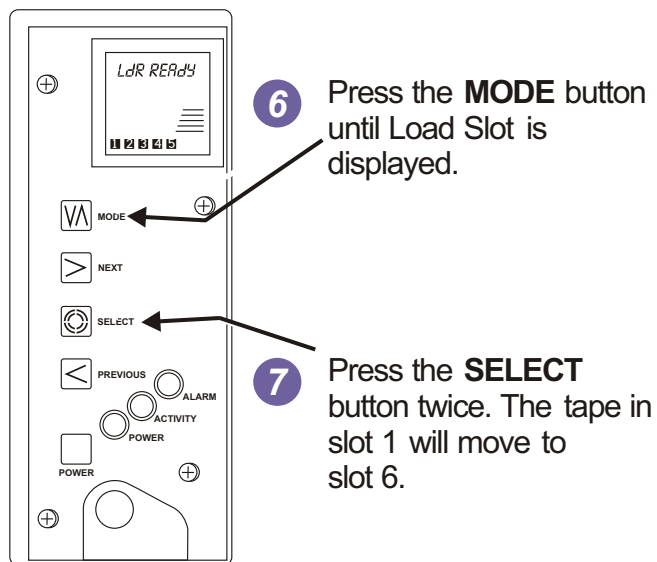


- 4 Press the **POWER** button to power up the StorEdge L7.

- 5 Place cartridges in slots 1-5.



The LCD indicates that 1-5 are loaded.

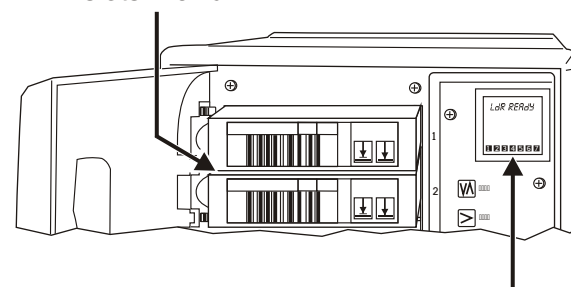


- 6 Press the **MODE** button until Load Slot is displayed.

- 7 Press the **SELECT** button twice. The tape in slot 1 will move to slot 6.

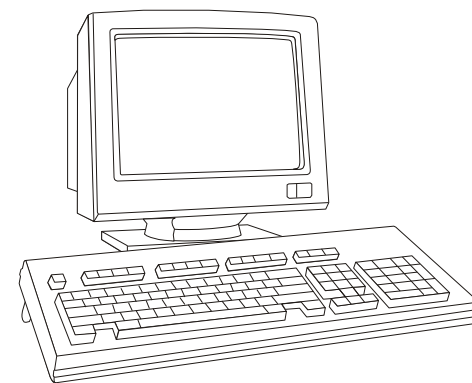
- 8 Repeat steps 6 and 7 to move the tape in slot 2 to slot 7.

- 9 Install additional data cartridges in slots 1 and 2.



The LCD indicates that 1-7 are loaded.

- 10 Power up your host system.



- 11 Verify your backup software. Note that the default robotics SCSI ID is 1 and the default drive SCSI ID is 3.

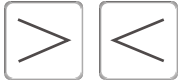
Your StoreEdge L7 is now ready to perform a backup or restore operation via your host system.

Selected Indicators and Controls

Buttons



Press the **MODE** button to select operations or to clear error conditions.



Press the **NEXT/PREVIOUS** buttons to view options within a selected mode.



Press the **SELECT** button to execute an operation or to move to the next menu level.

LCD

DC

DC on LCD indicates compression mode

WP

WP on LCD indicates write-protected tape

CT

CT on LCD indicates cleaning tape loaded or drive cleaning required

LEDs



ALARM LED indicates error condition



ACTIVITY LED indicates loader or drive activity



POWER LED indicates power is on

For a summary of common operations, consult the **KEYPAD OPERATIONS** label inside the front door.